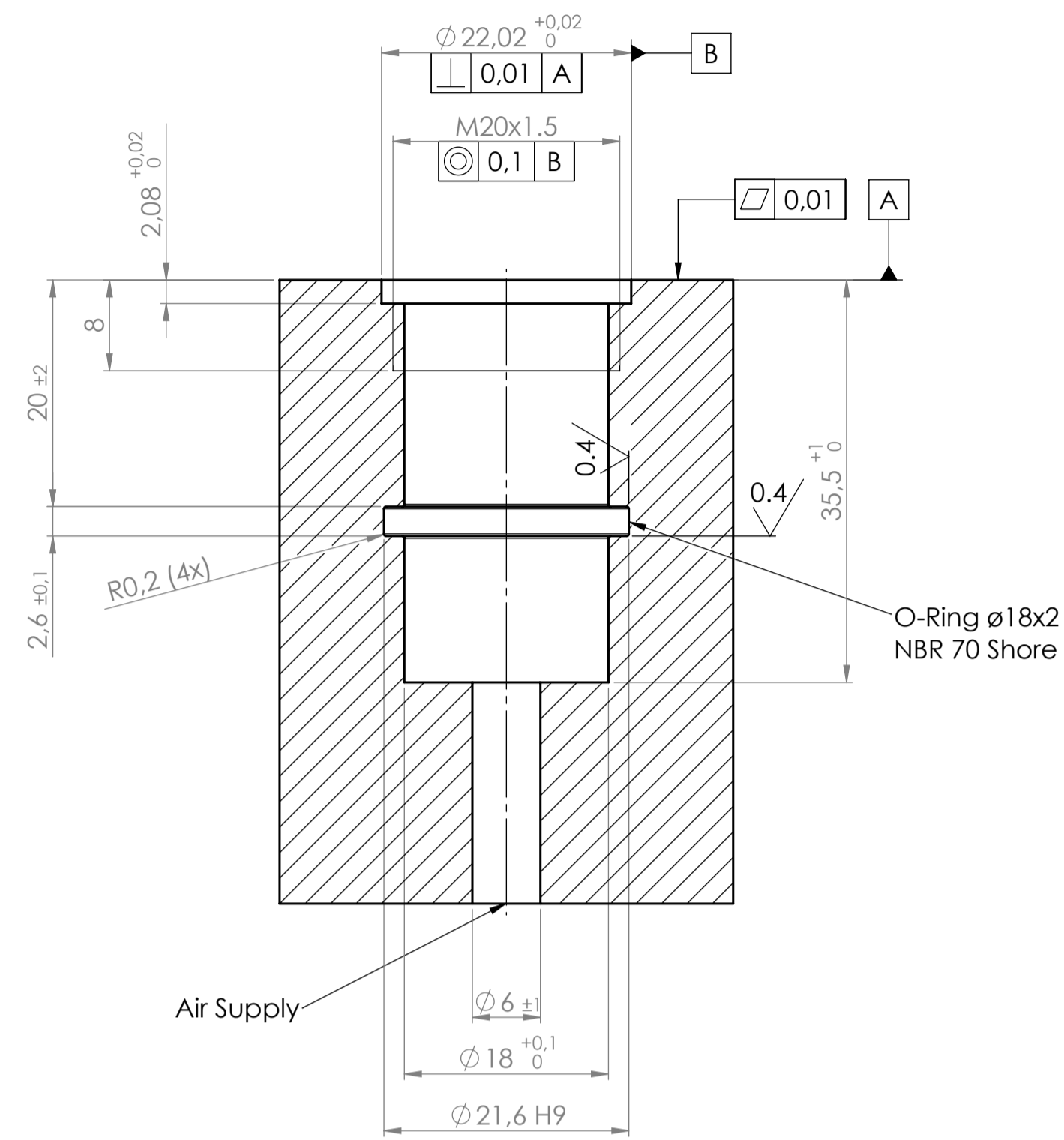
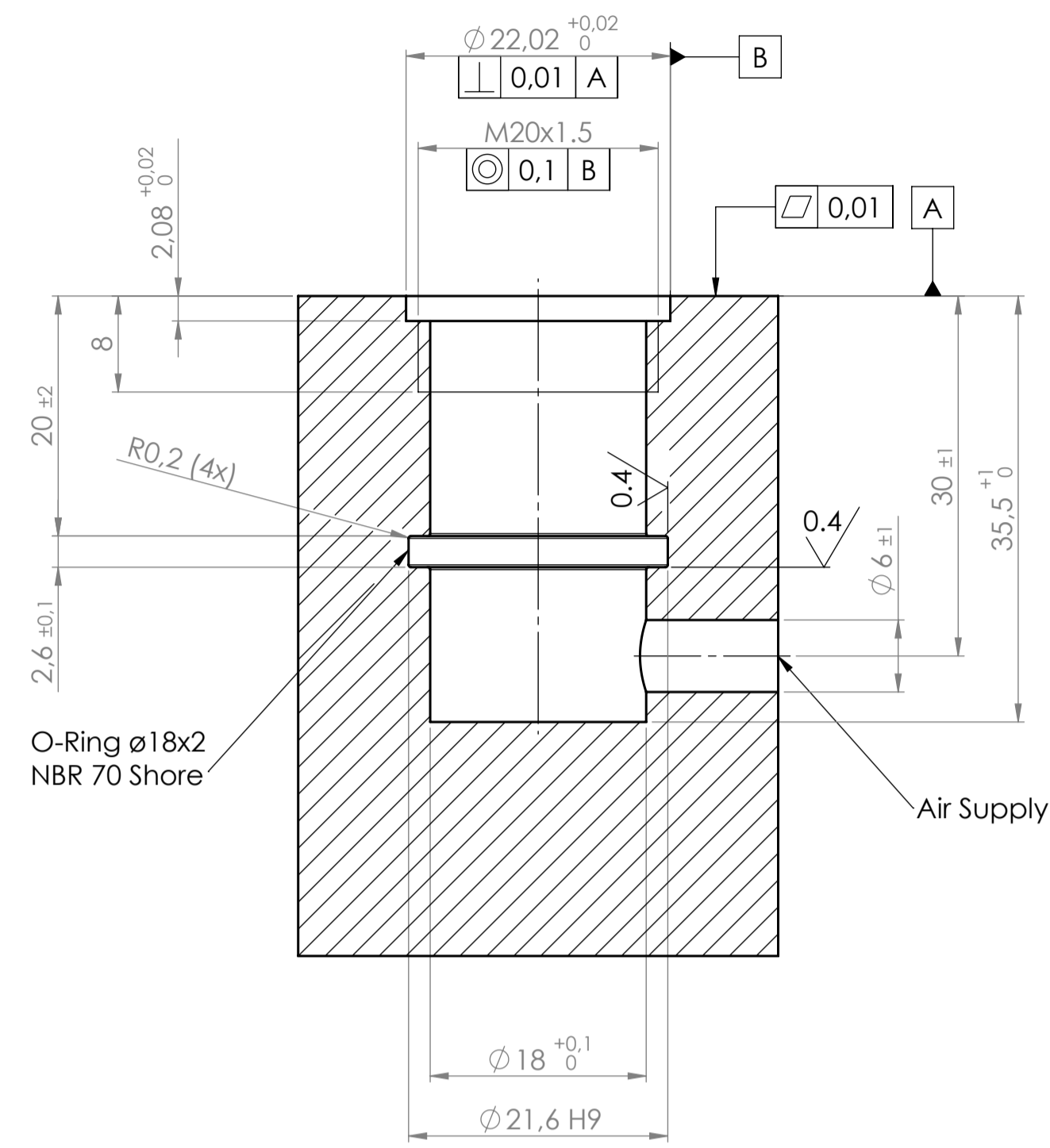


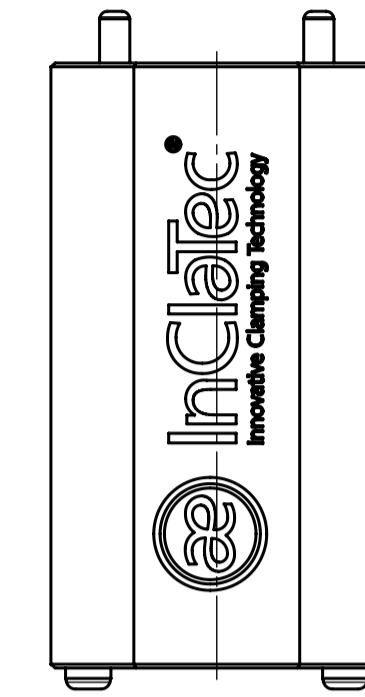
Option 1



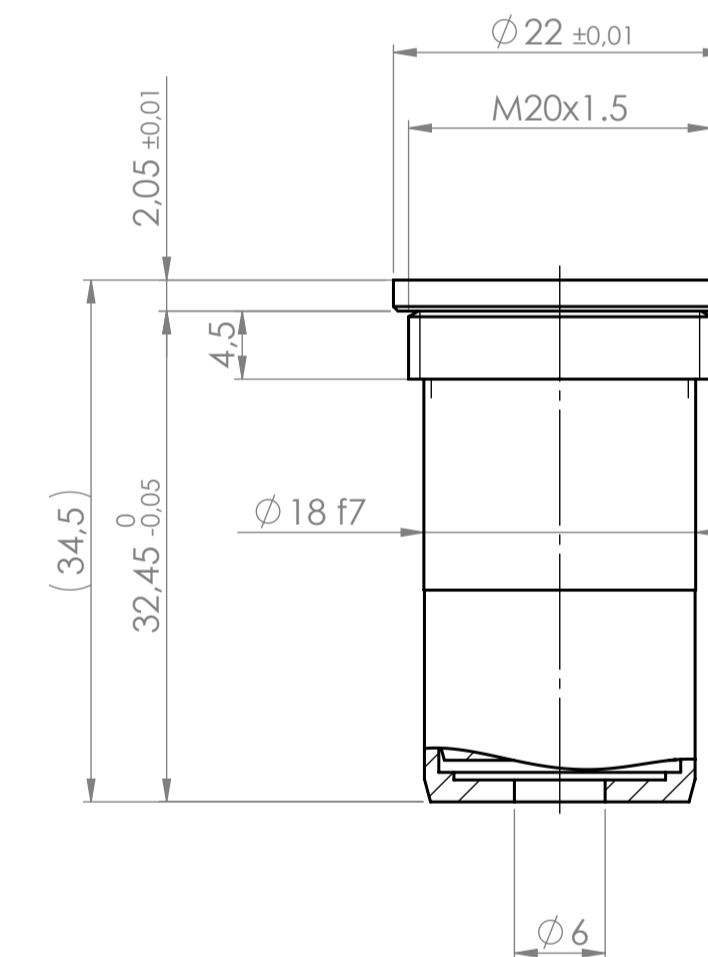
Option 2



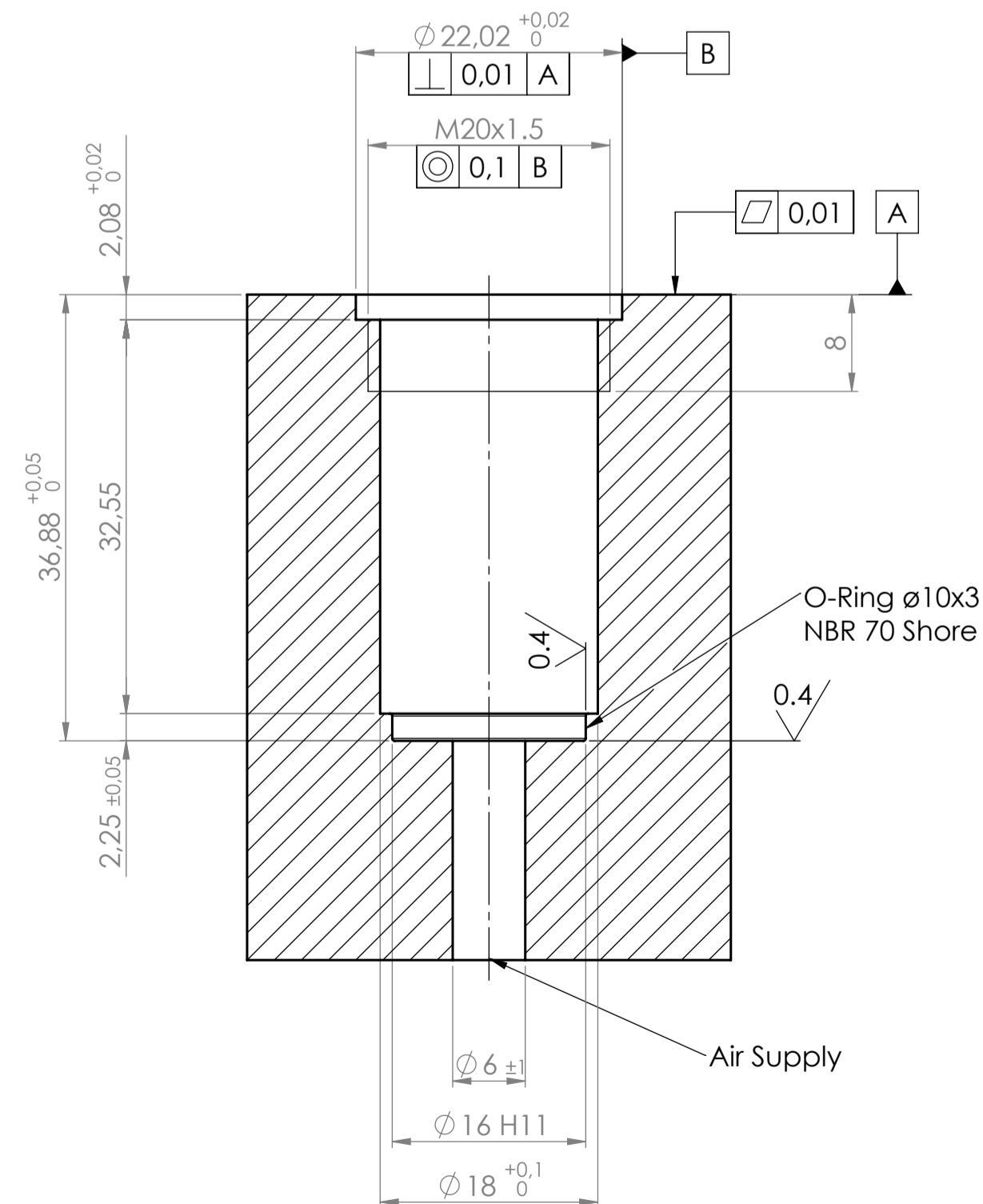
Using key QC022-AK (0008.9022)
Torque: 10 Nm



QuickChange Module
QC022XS / QC022XS C



Option 3



MATERIAL		TREATMENT		DRAWN BY		DRAWN DATE		SCALE		SIZE		SHEET	
InClatec Innovative Clamping Technology		BREAK SHARP CORNERS AND REMOVE BURRS						2:1		A1		1 / 1	
+31 (0)493-399193 www.InClatec.com		GENERAL ROUGHNESS Ra		DESCRIPTION		ASSEMBLY HOLES		QuickChange Module QC022XS / QC022XS C		DRAWING NR		REVISION	
COPYRIGHT © RESERVED		GENERAL TOLERANCES		FILENAME									